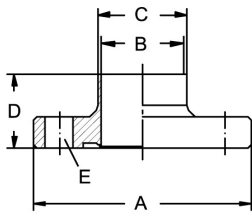


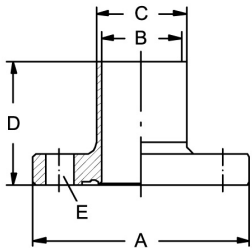
**Aseptik-/Hygiene-Flanschverbindung DIN 11853-2 + DIN 11864-2**      Art.Nr.      EUR      Art.Nr.      EUR

**Bundflansch DIN, DIN 11853-2**



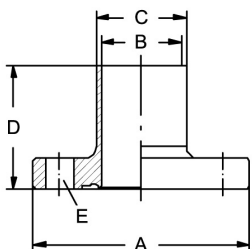
DN	A	B	C	D	E	Art.Nr.	EUR	Art.Nr.	EUR
								<b>AISI316L-1.4404</b>	
10	54	10	13	24	4xM8x30			472630	<b>37,80</b>
15	59	16	19	24	4xM8x30			472631	<b>38,60</b>
20	64	20	23	24	4xM8x30			472632	<b>39,40</b>
25	70	26	29	24	4xM8x30			472633	<b>40,10</b>
32	76	32	35	24	4xM8x30			472634	<b>40,80</b>
40	82	38	41	24	4xM8x30			472635	<b>42,10</b>
50	94	50	53	24	4xM8x30			472636	<b>45,90</b>
65	113	66	70	24	8xM8x30			472637	<b>59,10</b>
80	133	81	85	26	8xM10x35			472638	<b>85,70</b>
100	159	100	104	26	8xM10x40			472639	<b>100,40</b>
125	183	125	129	28	8xM10x40			472641	<b>136,30</b>
150	213	150	154	28	8xM12x50			472642	<b>173,40</b>

**Bundflansch ASME, DIN 11864-2 (AISI316L-1.4404)**



DN	A	B	C	D	E	Art.Nr.	EUR	Art.Nr.	EUR
								<b>AISI316L-1.4404</b>	
1"	66	22,1	25,4	40	4xM8x30			482003	<b>42,20</b>
1,5"	79	34,8	38,1	45	4xM8x30			482004	<b>56,30</b>
2"	92	47,5	50,8	45	4xM8x30			482005	<b>58,20</b>
2,5"	107	60,2	63,5	54	8xM8x30			482006	<b>81,10</b>
3"	125	72,9	76,2	56	8xM10x35			482007	<b>106,60</b>
4"	157	97,4	101,6	58	8xM10x40			482008	<b>165,90</b>

**Bundflansch ASME, DIN 11864-2 (AISI316L-1.4435)**



DN	A	B	C	D	E	Art.Nr.	EUR	Art.Nr.	EUR
								<b>AISI316L-1.4435</b>	
0,5"	54	9,4	12,7	40	4xM8x30			482101	<b>Anfrage</b>
0,75"	59	15,75	19,05	40	4xM8x30			482102	<b>Anfrage</b>
1"	66	22,1	25,4	40	4xM8x30			482103	<b>Anfrage</b>
1,5"	79	34,8	38,1	45	4xM8x30			482104	<b>Anfrage</b>
2"	92	47,5	50,8	45	4xM8x30			482105	<b>Anfrage</b>
2,5"	107	60,2	63,5	54	8xM8x30			482106	<b>Anfrage</b>
3"	125	72,9	76,2	56	8xM10x35			482107	<b>Anfrage</b>
4"	157	97,4	101,6	58	8xM10x40			482108	<b>Anfrage</b>